

Henderson County Gem and Mineral Society

High Country Gleamings

“An All American Club 1989-1990, 1990-1991, 1991-1992, 1992-1993, 1994-1995”



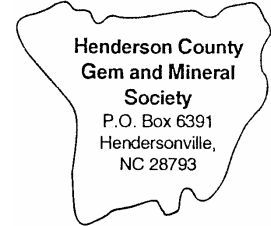
Small Bulletin:
1986, 1987, 1991
1992, 1993, 1994



Small Bulletin:
1986, 1991, 2000, 2006



Small Bulletin:
1984, 1990, 1997,
1999, 2002, 2006



Volume 32 Edition 8, August, 2010

In This Issue

From the Desk.....	1
Scheduled Meetings	1-2
Refreshments Hosts.....	2
Minutes – July Board Meeting	2-3
Minutes – July Regular Meeting.....	3-4
Fumbling Faceters.....	4
Children’s Library Case	4-5
Program Review	5-6
Workshop Schedule & Column	6
Field Trips	6
Federation Convention & Shows.....	6-7
Club Events – Spectacular, Christmas Party.....	7
Birthdays & Anniversaries	7
New Members.....	7
Under the Weather	7
Update on 29 th Gem & Mineral Spectacular ..	7-9
Membership List	9
Drumlummon Mine – Gold & Silver.....	9-11



Hello everyone

Well, our time is ticking down to our Gem and Mineral Spectacular. And I just wanted to take the chance to speak to our members.

These last two weekends I have attended the four shows in Franklin, NC and this past week I went to the three shows in Spruce Pine and had a great time.

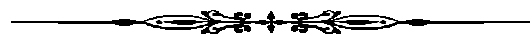
Now I am ready to try to volunteer my time at our festival. Now that does not mean that I won't take the time to do business with our vendors at our show. But I am also aware of the need of the club members to participate to help put on our show. One thing I feel can never be emphasized enough is this show is our main money raising activity for the year.

Without the money made there our club will have to go into our reserves to operate and that is never a good thing. Also our scholarship fund suffers.

I've talked to many people who state they will work where ever they're needed. Well unless we get commitments to cover certain committees we have a problem. Taking people for where ever our goal is to let you choose the position where you will be the most comfortable and also enjoy doing it for the difference shows in your work.

Anyway enough of my soapbox. But beside the money it is also a point to have a reputation as the show that vendors want to be in not only because of the sales but also because of how good they are treated. Well as the old Chicago politicians use to say vote and vote often. We want to sign up and sign up often.

Michael Atkkins, President



Our next monthly meeting will be on August 16th, 2010 at the Salvation Army building on Grove Street between 3rd and 4th Avenues, Hendersonville, NC at 7:30 pm.

The next Executive Board meeting will be on September 13th, at 7:15 p.m. in the workshop. Members are always welcome to attend. Refreshments to be determined.



REFRESHMENT

The hosts for July were: Hal & Vivian Hume, Joe Hiles, Diane Howard and Jerry Howe.

Thanks for the goodies.

The hosts for August are: Helen Hauser, Bill Johnson, Tom & Sherry Jones, and Steve & Karen Kiser.

If you have any questions or concerns, please call Gerald Boykin at 891-7399 and advise. But **please** don't wait until the last minute to call.



HOST/HOSTESS RESPONSIBILITIES

Providing refreshments, about once every other year, is one of the responsibilities each member agrees to when they join our Society. If you are unable to serve for a particular meeting, you will be expected to serve at the next. Gerald reports that some members seem to have forgotten this obligation and haven't even had the courtesy to return his calls.

Hosts/Hostesses for the evening, in addition to providing the refreshments (cake, cookies, cupcakes, crackers & dips, vegetables, or other finger foods) should see to the set up and break-down as well as being available to help the guests if needed.

The society provides the coffee, tea, sugars, creamer, and sodas, plus plates, cups, napkins and utensils.



Board Meeting Minutes Executive Board Minutes July 5th, 2010

Present: Michael Atkins, Ken Gillon, Helen Hauser, Diane Lapp, Tom Lapp, David Seeling, Landen Gaily, Susan E. Drumm

Absent: Jason Brown, Larry Allison, Tim Barton

Special Guest: Ralph Hammond Green

Meeting Started: 7:15PM

President Michael Atkins, Chair, called the meeting to order.

Diane Lapp Motioned to approve June Executive Board Minutes, **Landen Gailey seconded. Motion Carried Unanimously.**

Member at Large: David Seelig- Nothing new to share.

Treasurer: Helen Hauser reported what the June Auction took in. She also mentioned that the Scholarship CD is maturing and asked if there are any candidates? None Present knew of any at this time.

Education Chair: Diane Lapp reported a "Chain Making Class" was starting July 16th. Currently the Class is full. If you are interested in this class for the future, please contact her directly. The Library Case is filled for the remainder of the year.

Workshop Director: Tom Lapp reported what was taken in for the month. Soon there will be some replacements and repairs made on equipment. We are still under budget.

Public Relations: Landen Gailey mentioned that the press releases haven't gone out to the newspapers yet. **Landen Gailey** also requested if **Ralph Hammond Green (Newsletter Publisher)** received the article she has written about the purpose of the Yahoo Group.

Old Business: Helen Hauser mentioned that from now on there will be a new sign-in sheet for members of the club at meetings. This will allow us to keep and update the members current information. **Diane Lapp** reported that she took the only date available in December which was the 18th at the Chariot Restaurant. It will be the Club's Christmas Party. **Helen Hauser** made a **Motion** that the club accept that arrangement, **Landen Gailey seconded, Motion Carried.**

Diane Lapp will meet with the Chariot to fix menu & pricing as well as book for 2011.

Vice President/Program Chair: Ken Gillon, mentioned for the July Public Meeting, the main focus will be the Gem and Mineral Show Spectacular on September 3-6th (Our 29th Annual!) and on the work members have been doing in our shop during the past year. The August Members Meeting Program will be all about Gold by **Ken Gillon. Susan E. Drumm** mentioned that the board neglected to approve the Executive Board Minutes for May.

There was a **Motion** by Ken Gillon to approve the Executive May Board Minutes and *seconded* by David Seelig. **Motioned Carried Unanimously.**

Meeting Ended:8:10 PM

Submitted by:

SUSAN E DRUMM, Secretary



**Hendersonville County
Gem & Mineral Society**

General Membership Meeting July 19th 2010

President: Michael Atkins opened the meeting. Michael asked for a motion to approve the minutes from last month. Hal Hume made the motion and it was seconded by Robert Shuford. Motion Carried.

Secretary: Susan E. Drumm asked for contributors to the "Rock & Gem Magazine" and passed out information from the editor of the magazine. She also passed around the new flyer for the Gem Show.

Treasurers Report: Landen Gailey reported for our Treasurer, Helen Hauser. who was unable to make the meeting. She gave the Treasurers Report for year to date ending in June 2010. Also the scholarship fund was mentioned as being part of the revenue brought in from the Gem Show. The Collection of Mr. Larry Hauser is for sale July 22-23 for the Museum Board, Volunteers at the Museum are next for July 27-28 and finally the Rock and Gem Club Members are the 29-30th of July.

Education: Absent

Shop Director: Absent

Scholarship: Absent.

Membership: Jason Brown mentioned that we had 31 members in attendance and 3 new members: Lou Lorenz, Pat Lorenz *and* Susan O'Brian are our new members. There were four new people who came to the meeting.

Vice President/Program Chair: Ken Gillon; Mentioned today we will see a Current Video from a past show moderated by Michael Atkins, Chair. Program for next month is Ken Gillon. Ken Gillon was excited to discuss the new things we are doing in the area of public relations for this year's show that will be handled by Susan Drumm. She has over 20 years of experience in the field. We brought the media "up a notch" to bring in more people to our show and promote the educational aspect of our club. He spent two days re-doing the map so it is exactly to scale with the help of satellites. It appears in our new 4/Color brochure and even reflects the streets that will be blocked off, as well as walking directions, so there will be no problem in finding the Whitmire Building.

The display at the show will be a spectacular collection of gold specimens from several famous collections from the Southeast and elsewhere, there will be gold ores from local mines, beautiful pictures, and other gold related surprises. The display at the show will be a spectacular collection of gold specimens from the Southeast and elsewhere, there will be gold ores from local mines, presentations and beautiful pictures. The grand prize will be a 24kt ring with a gem-grade emerald cabochon. There will be matching earrings as well.

This will be the first year we will have a type of our own "Wheel of Fortune" that will give a prize with every spin of the wheel. It was made and welded from scratch by Jason Brown. The prizes will be amazing. Every spin will guarantee a prize of some kind. We will have some prizes for the wheel valued over \$300!

You don't have to be a member to help out at the show. Signup sheets are in the back of the room. A great deal of the proceeds of our Gem Show will go toward the Scholarship Fund. We are proud of our involvement in education as well as encouraging students to look into geology as their career. Many people have gotten their start in the Geology profession by qualifying for our club's scholarships.

Business Portion of the Meeting ended: 8:02PM Video was played with the audio done by Michael Atkins of the Gem Show from two years ago.

Video portion of the Meeting ended: 8:20 PM

Motion to end the meeting by Jacolyn and Steve Kieser seconded it. Motion Carried.

Erma Lorenz: Won the bracelet in the raffle.

Meeting Ended: 8:20PM We had a "Social Break" for food and conversation. Then we had the opportunity to listen to various members show the work they did with the capping machines at our Shop at the club. They also had samples of jewelry and gemstone specimens they have worked on. It was very much like a "show" and "tell" and was displayed on the table in the back of the room after they described what they had done including the name of the stones they worked on. It was a great credit to our lapidary classes and members dedication and hard work. People stayed later to ask questions of them and sign up for positions at the Gem Show. There were sign up lists on the same table in the back of the room. Members were asked to sign up for demonstrations at the show as well as other areas that needed volunteers. From those who would sign people in to our Gem Show Meeting, to the people who would be displaying some of their work and collections and some artists demonstrating how to cab, wire-wrap, bead and facet among others at our Gem Show.

We will also need volunteers for help in giving out flyers to local businesses and places frequented in their neighborhoods. The next public meeting we shall bring a minimum of ten copies for each member to give out to local retail establishments, Supermarkets, Book Stores, Churches and Schools etc.

Respectfully Submitted by,

Susan E. Drumm

Susan E. Drumm
Board Secretary



FUMBLING FACETERS

(Ralph R. Hammond-Green CM)

The Fumbling Faceters, a group of our members who are interested in Faceting. We normally meet the 1st Tuesday of the month at the work shop. The only requirement for "membership" is membership in our society and an interest in faceting. Those who want to find out more are also invited.

Eight members met on August 3rd. We discussed the display case for the upcoming Gem & Mineral Spectacular. We also viewed a video regarding cutting of an emerald cut. Several members of our group have volunteered to demonstrate faceting during the Spectacular.

One of our members brought in a refractometer, used for measuring the refractive index of gems. He checked and was able to confirm the identification of a faceted stone brought in by another member. We will also reviewed the "1st cut" scan of a diagram from a back issue from our library.

Our next meeting will be October 5th at 7:00pm. All members interested in faceting are invited to attend.

CHILDREN'S LIBRARY EXHIBIT

(Ralph Bastedo, PhD - CM)

July Case

Thank you to **Ralph Bastedo** for stepping up and volunteering to do the reviews of the display case.

July's exhibit in the children's section of the County Library was provided by Landen Gailey, the club's Public Relations Director. Entitled "The Story of Silver," it was a fitting prelude to subsequent exhibitions regarding gold.

Her display explains that the plentiful yet "bright white precious metal" (element Ag & # 47) has been mined since 2000 B.C.E. From 1792 to

1965 the U.S. used silver in its coins, including “America’s First Silver Dollar” of 1794.



Pure or 99.9% Fine Silver is “very soft,” and so is often combined with other metals to harden it. Since the 1300’s C.E., silver has been alloyed with copper to create Sterling Silver (which is 92.5% Ag). This alloy is “considered to be the standard for jewelry and silverware.”

Regrettably, “Silver darkens when exposed to oxygen and sulfur... The worst tarnish occurs in Sterling Silver because of its copper content.”

But Argentium Sterling Silver, created in 1996 by mixing Germanium, is “highly tarnish-resistant because the Germanium (forms an) oxide on the surface of the silver.”

Examples of silver usage shown by Gailey include pendants each of:

- ◆ Pure or Fine (99.9%) Silver
- ◆ Silver (99%) Precious Metal Clay (PMC)
- ◆ Argentium Sterlin Silver (93% Ag)
- ◆ Sterling Silver (92.5% Ag)

Also shown are (a) metal facets which have been electroplated with Silver Plate, (b) a silver spoon darkened by tarnish, and (c) a “Nickel Silver” wrist-band which is 60% copper, 20% nickel, 20% zinc, and *zero percent* silver. When it comes to such labels, I say there oughta be a law

...

PROGRAM REVIEW

July 19th, 2010
(Ken Gillon - CM)

See the report contained in the minutes of the July meeting.

August's program will be by Ken Gillon, Geologist and Vice President of the Henderson County Gem and Mineral Society (HCGMS). Ken's talk is titled: "There's Gold in Them Thar Hills", and will focus on some of the geologic, tectonic, and historical aspects of gold exploration and mining in the Southeast USA.

Ken has been involved in the gold exploration and mining business in the Southeast for over 15 of his 30 years as a professional geologist.

This talk is a prelude to the HCGMS's 29th Annual Gem and Mineral Spectacular - Show and Sale, to be held at the Whitmire Activity Center in Hendersonville, on September 3 through 6.

The title of Ken's talk is also the theme and special exhibit of this year's show, which will include native gold specimens on loan from the collections of Travis Paris (Professional Geologist and Member of the Knoxville Gem and Mineral Society (<http://www.discoveret.org/kgms/>), and a separate exhibit by Ken Gillon.

For those of you who come to this talk, you will leave with rocks from one or more gold deposits in the Southeast USA, some of which make nice cabochons.

Ken Gillon grew up in East Point, Ga, where at the age of 5, he developed an interest in rocks from playing in the creek behind his house, as well as from trips with his father and family to crawl through gold mines in Dahlonega, Georgia.

Ken obtained his BS and MS degrees in Geology at the University of Georgia, and has worked for 5 different companies throughout his 30 years of professional experience (two mining companies, 2 environmental consulting firms, and nearly 5 years working for the NC Geological Survey, in Swannanoa).

Ken has given many talks at professional meetings and published numerous geologic papers related to gold, the geologic history of portions of the Southern Blue Ridge, environmental site cleanups, and geohazards (landslides and slope instability issues). Ken operated a small part-time business in South Carolina for nearly 20

years, making custom jewelry, doing repairs, and selling these and mineral specimens with his wife, Ann (they met on an outcrop, while at a UGA field school) in gem shows in South Carolina.

Ken joined the HCGMS in December 2009, and his goal is to learn from others about all aspects of our hobby, and to share his knowledge and enthusiasm (i.e., obsession) with all aspects of the earth's natural history.

A Brief Note about Ken's Current Work on Landslides in Western North Carolina, and a Public Service Request for Landslide Photos and Information associated with the July 1916 Storm of Record that affected the Henderson County Region:

Ken is a Project Geologist and NC Registered Professional Geologist for the NC Geological Survey (NCGS), working with a team of dedicated geologists to develop landslide hazard maps for 19 western NC counties targeted by the NC Legislature in 2005.

In this role, Ken has had the privilege of working in many areas of the NC Blue Ridge, whose rocks, mountain-building, and erosional events span the time period from 1.8 billion years ago, to the present.

Thus far, the landslide mapping team (affectionately referred to as "Team Slide"), has published maps for Macon, Watauga, and Buncombe counties. These maps are in being made available to the public via county agencies, on an interactive NCGS webserver, as downloadable electronic maps, and as paper prints.

Landslide hazard maps for Henderson County are nearing completion by the NCGS.

While many people remember the storm effects of Hurricanes Francis and Ivan in September 2004, few realize that a much greater event in July 1916 produced catastrophic flooding, landslides, and many fatalities in western North Carolina. This event remains the storm of record for this region of western North Carolina, and while many photographs of the floods associated with this storm are available, no photographs showing the mountainsides and numerous reported landslide scars that affected Henderson

County or the surrounding region, have been uncovered by the NCGS's diligent search of historical record repositories in the region. The locations of some of the 1916 landslides have been approximated from written records, but having photos of actual slides could help significantly in the calibration of slope stability modeling, increase the understanding of landslide processes, and further refine the production of landslide hazard maps. THIS IS A PERSONAL REQUEST FROM KEN GILLON TO HCGMS MEMBERS, THEIR FAMILIES, FRIENDS, AND OTHERS IN THE HENDERSON COUNTY REGION FOR ACCESS TO ANY PHOTOS THAT MIGHT SHOW THE EFFECTS OF 1916 LANDSLIDES (PHOTOS OF MOUNTAIN VISTAS WITH LANDSLIDE SCARS, FOR EXAMPLE). If you know of any such information, please feel free to call Ken at (828) 296-4500 (work), 808-1353(cell), or email me at ken.gillon@ncdenr.gov. Thank you!



Work Shop

(Tom Lapp – Shop Supervisor - CM)

In keeping with the practice of making the workshop available for the Show Committee's use, prior to, and during the Show, the workshop will be closed from Aug. 7th 'til Sep. 11th.

If you haven't volunteered for the show yet, get going!! And do it !! If you have any questions, please contact Tom Lapp.



FIELD TRIPS

(Tim Barton CM & Richard Jacquot, Jr. CM)

FEDERATION CONVENTION & SHOWS

(From "Lodestar & Other Sources)



August 13-15, 2010: Gulfport, MS - Harrison County Gem & Mineral Society. 35th Annual

Harrison County Gem & Mineral Show, West Harrison Community Center, 4470 Espy Ave, Pass Christian, MS. Hours: Fri 12-7, Sat 9-6, Sun 10-5. Admission: Adults \$3 & children under 12 free with paid adult. Contact: Tomsey Westermeyer Show/Dealer chairman at: 228-586-5279 or e-mail at tomsey@cablone.net.

The Federation sponsors several classes at William Holland School of Lapidary Arts and at Wildacres. For list of classes, see last month's newsletter.

SESSION TWO - WILDACRES
MONDAY, August 23 - 29, 2010

SESSION THREE - WILDACRES
MONDAY, September 13 - 19, 2010

SESSION FOUR - WILLIAM HOLLAND
SUNDAY, October 10-16, 2010

For more information the following internet links may prove to be useful:

Wildacres

Roy Deere : sfmswadirector@gmail.com

Mrs B.J. Gearhart: waregistrar2010@yahoo.com

William Holland

Steve Henegar: sfmswhdirector1011@gmail.com

Lisa Roberts: whregistrar10@yahoo.com

September 10-12, 2010: Winston-Salem, NC - Forsyth Gem & Mineral Club. 39th Annual Gem & Mineral Show, Educational Bldg, Dixie Classic Fairgrounds (free parking through Gate #9 from 27th St only). Hours: Fri & Sat 10-7, Sun 12-5.

Contact W.A. Marion at marional@yadtel.net

CLUB EVENTS:

29th Gem & Mineral Spectacular: September 3-6. See committee report later in this issue.

Our annual **Christmas party** will be December 18th so please reserve the date. Dianne Lapp has agreed to serve as the chair person, getting things lined up and making the arrangements. She would appreciate some help with decorations, entertainment, all the rest of the work which goes into having a enjoyable and successful event.

SPECIAL OCCASIONS TO CELEBRATE



Birthday Greetings to: Mary Bradt, 08/03; Charles Summey Jr, 08/04; Blanche Brooke, 08/09; Harold Eadie, 08/09; Sonia Arnold, 08/11; Ralph Sparks. 08/11; Madeline Farrell, 08/12; Harold Doller, 08/16; Karen Kiser, 08/18; Malvern Brown, 08/20; Joe Hiles, 08/21; Bill Gould, 08/22; Dr. Keith S.Thompson, 08/22; Mona L. Newcomer, 08/31 John Bree - 09/03; Margaret Sparks - 09/04; Diane Lapp - 09/09; Helen Hauser - 09/15; Donna K. Taber - 09/15; Natalie Ambrose - 09/16; Margaret Higgins - 09/21

Anniversary Best Wishes to: Arthur & Linda Kimball - 09/13

NEW MEMBERS

We have no "new member" information for this month.



UNDER THE WEATHER

We've received no reports of members being out of sorts or not up to snuff.



**Update on
 29th Gem & Mineral Spectacular**

As we draw nearer to the upcoming Fall Gem and Mineral Spectacular - Show and Sale, there are several fronts we are working towards completing, and several that need the Membership's immediate attention. Each of these areas are discussed below in order of priority:

1) **Signup Sheets:** While we have several show volunteer slots filled already, nearly all need more help. The show areas we need alot of signup help with include: The Kitchen, Setup/Teardown; Distributing flyers and helping Susan Drumm with other aspects of this area, Demonstrations, The Wheel of Gem and Mineral Fortune, Putting Up/taking down signs, Van-

Drivers (you must have a clean driving record and good eyesight to qualify for this position). At the August 16 meeting, these signup sheets will be available to members, as well as a master sheet showing the overall status of our time commitments to the show. I would hope that each of you will sign up for something so that we don't have blank spots or duplicate efforts.

2) **Publicity:** We need lots and lots of folks willing to distribute flyers. We have only three people signed up thus far, but I'm expecting you will rise to the occasion on Monday August 16! But For Now, we need help this week (starting Wednesday, August 12) in the workshop, folding several thousand of the new style color flyers and helping organize them into stacks for the members to distribute starting August 17th. The workshop is closed until after the show so that we may have space to organize and prepare for this event. We will continue for as many days as it takes to complete this task as well as organizing them for distribution areas. Please call Susan Drumm 828/684-8664, or Ken Gillon 828/808-1353, to offer your help. We will also be calling you, as this newsletter may not reach you before Wednesday. Well over 1000 flyers have already been distributed, with some going to our show vendors, the Campbell Mineral Museum in Clemson, Belle Chere, the Spruce Pine Gem and Mineral Show, the Henderson County Mineral and Lapidary Museum, and several other places. Also, we are sending out the Show flyer as an attachment to the email containing this month's newsletter. Please forward this e-flyer to all on your email lists that you think might have some interest in coming to the show. If you do send out electronic flyers to your contacts, please send Susan (pspsdrumm@msn.com), or Ken (gil-lonk@bellsouth.net) an email, letting them know how many people you emailed the flyer to (this will be very useful to us for future marketing efforts. **Publicity:** Distributing flyers and helping Susan Drumm with other aspects of this area-only 2 out of 12 positions filled. But for now, we need help folding several thousand of the new style color flyers this week, starting August 13 (Thursday) evening, at 6pm in the workshop, which is closed until after the show so that we can use it to organize and stage items for the

show. It is likely that we will need help on Friday as well, and possibly even on Saturday. Even after flyers are folded, we will need help assembling them into bags along with maps targeting different areas in the Asheville and surrounding regions. Please call Susan Drumm, at 828/684-8664, or Ken Gillon, at 828/808-1353, to offer your help. We will also be calling you, as this newsletter may not reach you before Thursday. **Publicity:** We need lots and lots of folks willing to distribute flyers. As mentioned above, we have only three people signed up thus far, but I'm expecting you will rise to the occasion on Monday August 16!

Well over 1000 flyers have already been distributed, with some going to our show vendors, the Campbell Mineral Museum in Clemson, Belle Chere, the Spruce Pine Gem and Mineral Show, the Henderson County Mineral and Lapidary Museum, and several other places. Also, Ralph will be emailing an electronic version of the the Show flyer to each of you. Please consider forwarding the show e-flyer to all on your email list who you think might have some interest in coming to the show. Also we would very much appreciate it if you would keep a tally of the number of people you email the flyer to. We would like for show attendees to tell us where they heard about the show, and such information could help immensely in our future show marketing efforts.

3) **Displays/Exhibits:** Steve Kiser reports we have commitments for 11 of 12 exhibit cases. Thus far we have the following exhibits:

1. Gold - Travis Paris (note: Travis will be bringing his own case)
2. Gold and Gold Mining- Ken Gillon
3. Pyrite (Fool's Gold) - David Owen (with Dave's display we'll have the Golden Ying vs Yang!)
4. Fossil Stromatolites - Ralph Bastedo
5. Russian Minerals - Steve Kiser
6. Theme To Be Determined - Henderson County Mineral and [Lapidary](#) Museum - Helen will let Steve know after sees what other displays show
7. [Wire Wrap Jewelry](#) - Sonya Arnold
8. Raw Rock and the Cab from It - Jason Brown

9. Cabochons, Wire Wrapping, Faceted Stones - Crazy Cabbers Gina, Don, Hey Suk, & Danny
10. Ladies Jewelry - Necklaces, Earrings - Ginny Bohanan
11. Quartz - Tim Barton
12. Faceting - Fumbling Faceters

4) **Setup/Teardown:** We need 3 more people help Patrick Biggs with Setup, and 4 with Teardown. 3 out of 6 positions filled

5) **The Kitchen:** No Leader for this yet, and only 2 out of 24 time slots filled. We'll need to feed the Pilgrims !!

6) **Demonstrations:** 11 of 24 time slots filled

7) **Admissions:** 11 of 25 time slots filled.

8) **Geode Cracking:** 3 of 24 time slots filled

9) **The Wheel of Gem and Mineral Fortune:** 3 of 24 time slots filled

10) **Putting Up/taking down signs:** Only 1 position filled. Help!!

11) **Van Drivers** (you must have a clean driving record and good eyesight to qualify for this position): 2 thus far.

12) **Teardown:** 2 of 6 positions filled

At the [August 16](#) meeting, these signup sheets will again be available to members, as well as a master sheet that will be updated during this meeting to indicate which slots are filled and those still empty. The Show Committee sincerely hopes that each of you will sign up for something so that we don't have blank spots or duplicate efforts.

Membership List



We missed having the forms available at the July meeting so the following is a repeat from last month's newsletter.

As some of you may have noticed, we are having some trouble with our membership records and the addresses. Normally in March, we print a list with everyone's address, telephone number and e-mail (if provided).

We've not been able to do this because the lists (unfortunately we seem to have too many lists) are not correct and are, in some cases, out of date.

To help us get things correct, which will also help those who receive this newsletter by regular mail, we are asking everyone to fill out a "member information form." It is essentially the same information you provided when you first joined our society.

We ask that you print clearly and legibly so we can get things correct.

Thank you in advance for your cooperation.

JAYSON BROWN,
Membership Chair

Dazzling discovery: High-grade 'jewelry rock' found in Drumlummon Mine

By EVE BYRON Helena Independent Record | Posted: Monday, April 19, 2010 8:00 am

(Editor's Note – These two articles have been supplemented from additional sources)

MARYSVILLE - Emerging from the depths of the Drumlummon Mine, Montana Gov. Brian Schweitzer marveled at what he had just witnessed.

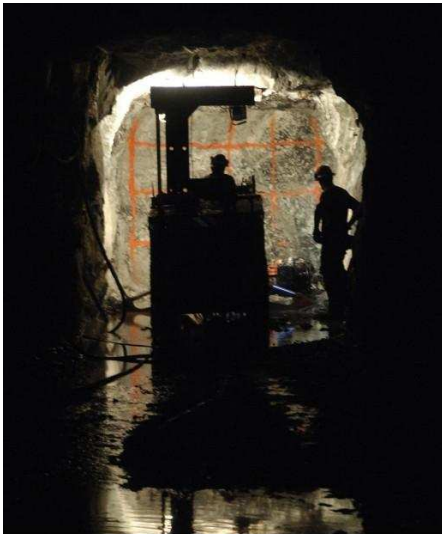
"To stand with the mining engineers and ... they say there isn't any vein anywhere in the world - not in Russia, Africa or South America - that contains more gold and silver per ton is amazing," Schweitzer said. "Either one would be remarkable in its own right, but to have them both together?"

"This is the mine that built Carroll College and the Cathedral, and the ore body has been rediscovered."

What thrilled Schweitzer, as well as geologist Brooke Hintze, John O'Donnell, chairman of RX Exploration Inc., which owns the mine and Ben Gunsinger, whose company New Millennium is



The recently discovered "Charly" vein in the Drumlummon Mine contains high-grade ore known as "jewelry rock." Photo by ELIZA WILEY/Helena Independent Record



Miners drill holes on a grid pattern at the farthest point in the Drumlummon Mine near Helena recently. The holes will be filled with explosives, then the slow process of moving out the debris and starting over will occur as New Millennium moves deeper into the mountain. Photo by ELIZA WILEY/Helena Independent Record

working the mine, is what's known as the "Charly" vein.

Charly is about 7 feet wide and generally runs parallel to the

Drumlummon vein, where Thomas Cruse and subsequent miners removed up to \$50 million in gold and silver from the mine in the late 1800s, when the Drumlummon Mine was the largest underground gold producer in the state. Legal battles and the flooding of the mine's lower levels ended exploration and excavation 50 years ago, until RX started working it again about two years ago.

In November 2008, New Millennium drilled core



Visible-Gold-and-Silver-Drumlummon-2010

samples from the main shaft based on the rock formations, and they showed about an ounce of gold and almost 23 ounces of silver per ton of rock in certain areas. So the company started removing water from the mine and tunneling downward at an angle they thought would intersect the Charly vein.

After tunneling in more than 500 feet, 800 feet below the surface, they reached the vein, Hintze said.

"The vein starts over here," he points toward a black streak on the rock wall, "and it really runs hot," he finishes with a broad grin. "It's showing three ounces of gold and 55 ounces of silver per ton."

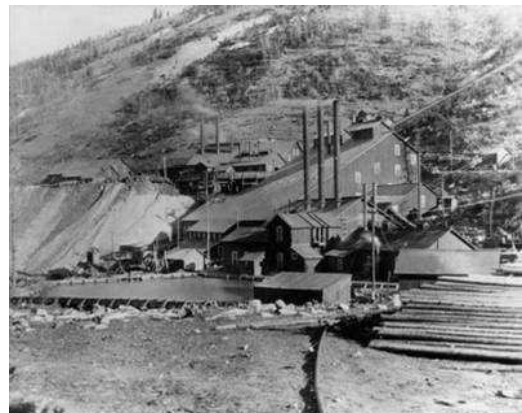
A 1-ton boulder is about 12 1/2 cubic feet.

"As a geologist, it's really exciting to find something like this," Hintze said. "But it's also scary because of the complexity of the vein, and the multiple generations running through it will give us a challenge."

Samples of the Charly vein show that in places it has up to 7 ounces of gold and 200 ounces of silver per ton of rock, with an average of 3 ounces of gold and 55 ounces of silver. That amount of metal is known in the mining community as "jewelry rock," noted Warren McCullough with the state Department of Environmental Quality.

"That's what they call high-grade ore, especially when you can see the gold," he said.

Since they intersected the vein, Hintze said they can probably follow it from both sides of the



Drumlummon Mine & Mill - Late 1800's

tunnel. They're not sure of its length.

McCullough added that the company can operate under its exploration license with a small miner's exclusion as long as they don't disrupt more than five acres outside the underground mine. The

DEQ is closely watching the operations, he added.

"We haven't seen any applications from them applying for an operating permit. It will be interesting in seeing how it all works out," McCullough said.



Undated photo of mine entrance

O'Donnell, who lives in Toronto but also was visiting the mine last week, said they've invested about \$15 million in reopening the Drumlummon. He called the recent discovery "bonanza" grade ore, but said he's not sure how quickly they'll ramp up production or how long the mine might

produce ore.

"We don't have enough data yet to put those figures out to the public," he said. We can only work on what we're doing now, which is putting the mine into production and keep exploring. But the future is looking very, very good.

"These results are fabulous, spectacular. I don't think you'll find many mines in the world with this caliber and potential."

Contact Mill owner Bill Antonioli said he has four people working at the mill, which was idled about 1 1/2 years ago, getting it ready to start up for the Drumlummon ore. He says they might employ about 10 people eventually. "Through experience, I tend to be a little skeptical, but we are getting the mill ready to operate if the boys at RX decide to ship us ore," Antonioli said.

The company also is continuing to pump and treat the estimated 100 million gallons of arsenic-tainted water that flooded the lower levels, and also is working on a new mine entrance below the current portal.

Schweitzer, a soil scientist, said he's also impressed that the water being treated is coming out with a pH level around 7, which is neutral. Other mines in Montana have run into trouble with acidic water.

"This mine will be good for the community of Helena, which has waited 100 years for this to happen," Schweitzer said.

Reporter Eve Byron: can be reached at (406) 447-4076 or at eve.byron@helenair.com.

Drumlummon Mine hits \$2M vein of gold, silver

By the Associated Press | Posted: Monday, July 19, 2010 11:51 am

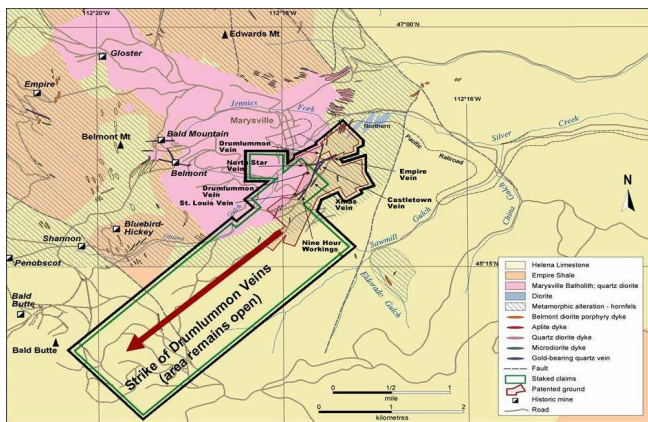
HELENA - Officials with the Drumlummon Mine northwest of Helena say a recent batch of ore yielded nearly \$2 million in gold and silver.

RX Exploration chairman John O'Donnell says the ore was a blend of rock from a promising vein as well as lower grade rock that was loose on the ground at the Marysville mine.

The ore yielded 1,200 ounces of gold and 33,700 ounces of silver. Gold is selling at nearly \$1,200 per ounce while silver is over \$17 an ounce.

O'Donnell says some samples at the mine have shown up to 13 ounces of gold and 2,036 ounces of silver per ton.

Toronto-based RX Exploration has been working for more than a year to reopen the Drumlummon Mine, which was active from the 1880s through the 1950s.



Claim Map

O'Donnell expects to begin shipping ore for processing to the Contact Mill near Philipsburg in the next few weeks.

High Country Gleamings



President
Vice President/Program Chair
Secretary
Treasurer
Member-at-Large

OFFICERS:

Michael Atkins 864-472-5454
Ken Gillon 828/808-1353
Susan Drumm 828-684-8664
Helen Hauser 828-891-3939
David Seelig 828-776-2872

Education Director
Field Trip Directors

Membership Director
Newsletter Editor
Public Relations Director
Refreshment Host Chairman
Scholarship Director
Stamps for Scholarships
Workshop Director

COMMITTEES & FUNCTIONS:

Diane Lapp 828-776-8098
Tim Barton 828-885-8248
Richard Jacquot, Jr. 828-683-1048
Jason Brown 828-702-5756
Ralph R. Hammond-Green 828-606-6098
Landen Gailey 828-272-0180
Gerald G. Boykin 828-891-7399
Larry Allison 828-658-9433
Dr. Keith Thompson 828-862-8160
Tom Lapp 828-776-8098

GENERAL MEETINGS: 3rd Monday of each month except December. 7:30 pm at Salvation Army Building, Grove St. between 3rd and 4th Ave., Hendersonville, North Carolina.

PURPOSE: To study and collect rocks, minerals and fossils, and cooperate with educational institutions, plus other groups, increasing the knowledge and popular interest in geology, mineralogy, and lapidary arts, and related subjects.

DUES: Single membership -- \$15; each additional family member -- \$5; junior membership without adult participation -- \$5; plus \$6 initiation fee for new members.

REFRESHMENT HOST POLICY: Policy in effect since Society formed in 1978. Every member on an alphabetical basis is scheduled to provide refreshments as noted in the bulletin.

WEB SITE: www.hcgms.org



Please Save This Stamp

FIRST CLASS MAIL

August 2010